

Sinterklaas beebotmat

Vorbereiding:

- knip alle beebotkaarten uit
- lamineer de beebotkaarten
- stop ze in een transparante beebotmat of leg ze onder een transparante plaat
- knip de routekaartjes uit

Activiteit:

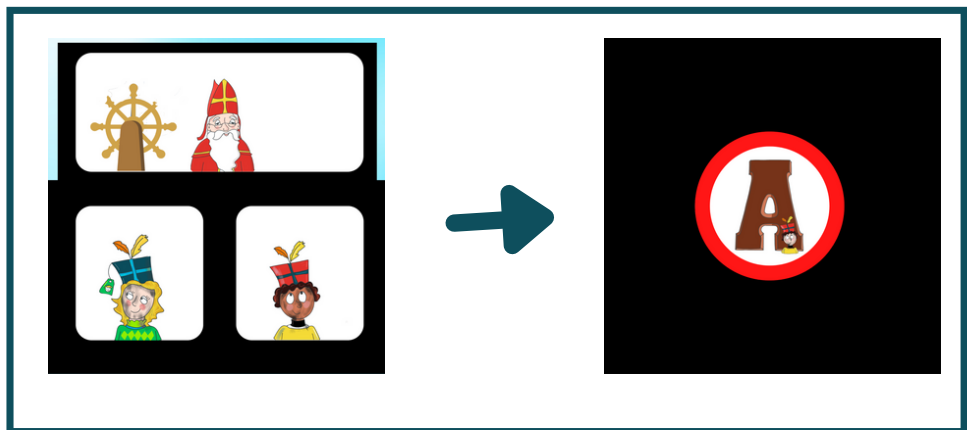
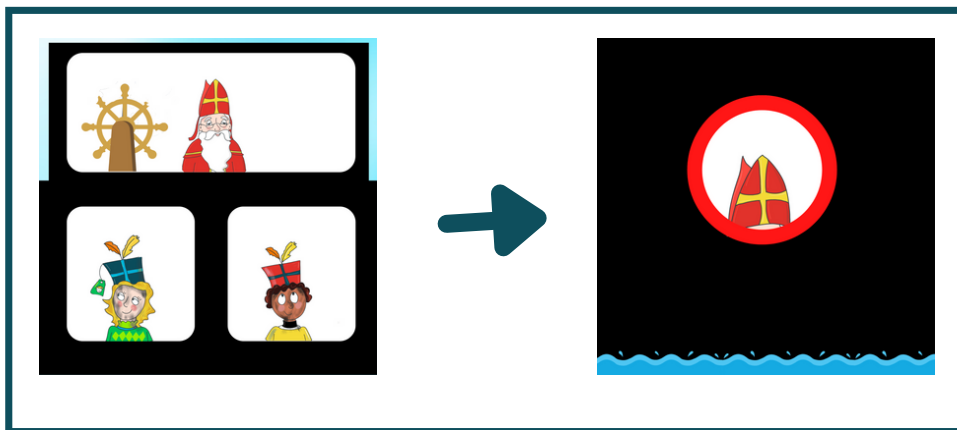
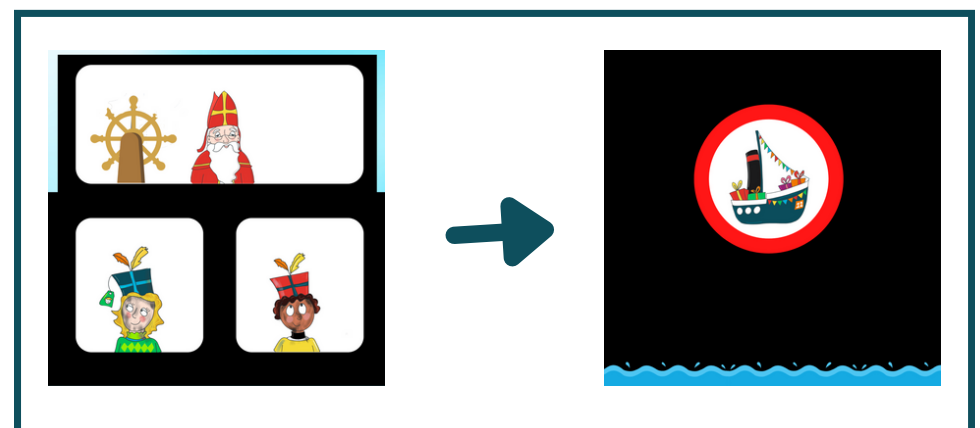
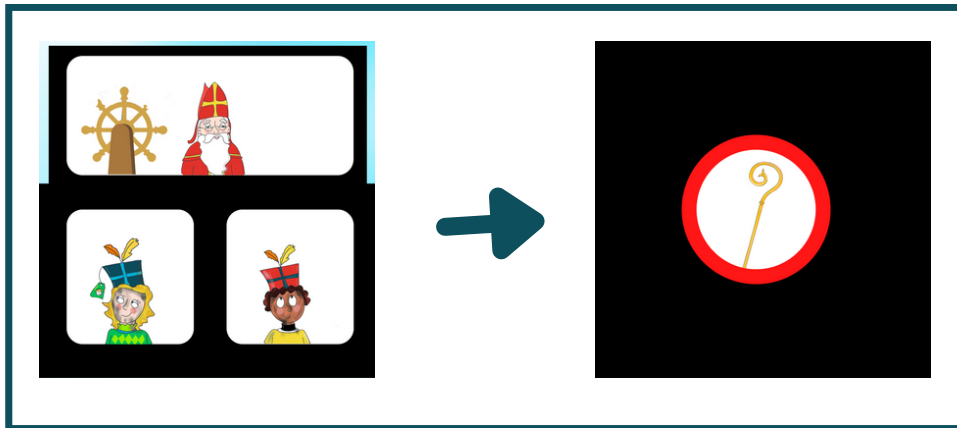
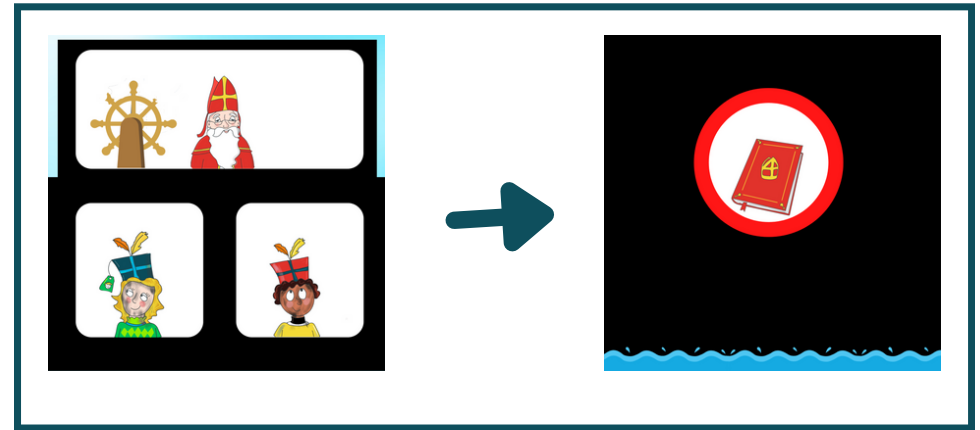
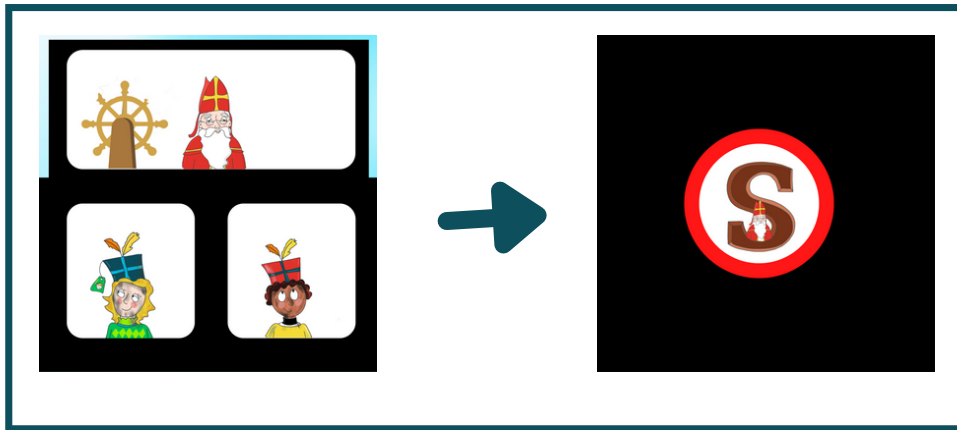
Bespreek met de kinderen eerst de beebotmat in een kleine of grote kring. Stel ze vragen, zoals:

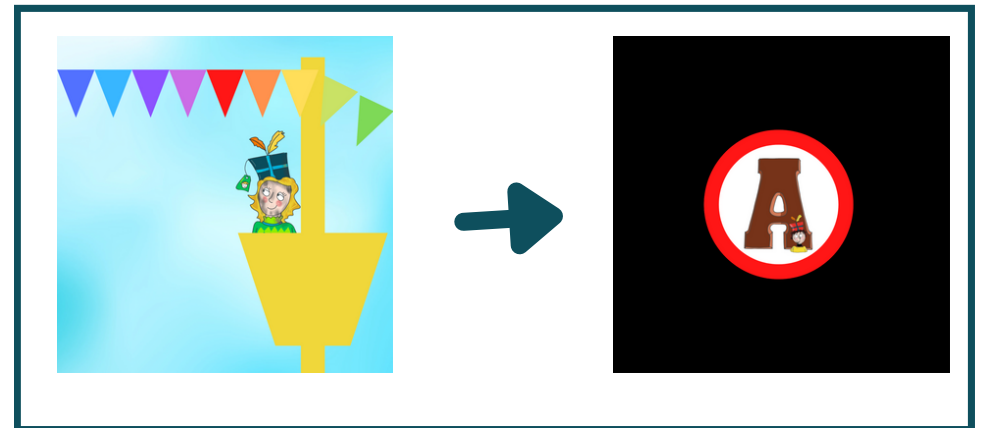
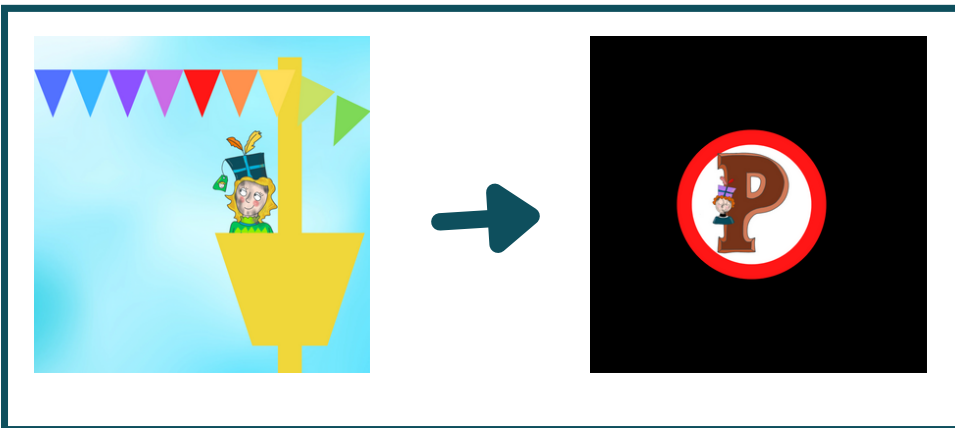
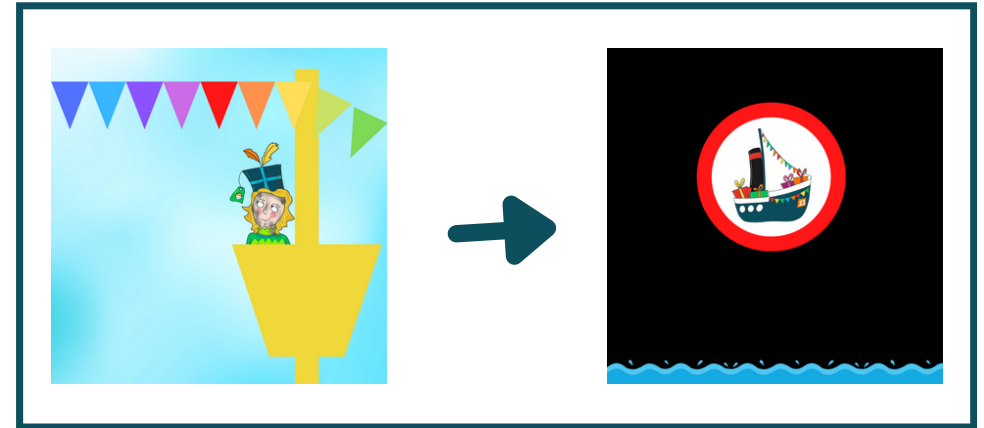
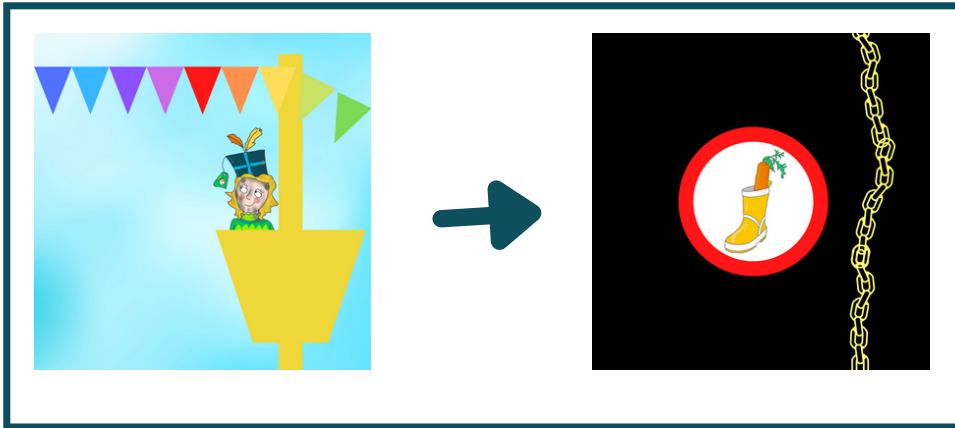
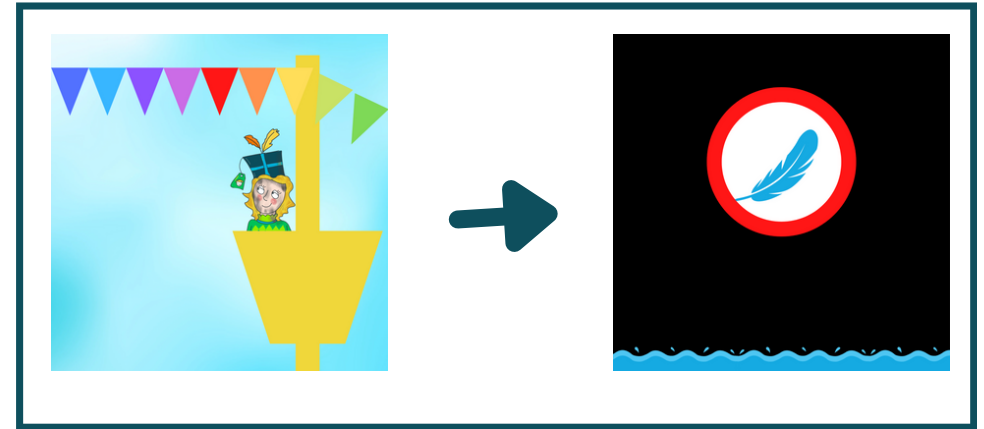
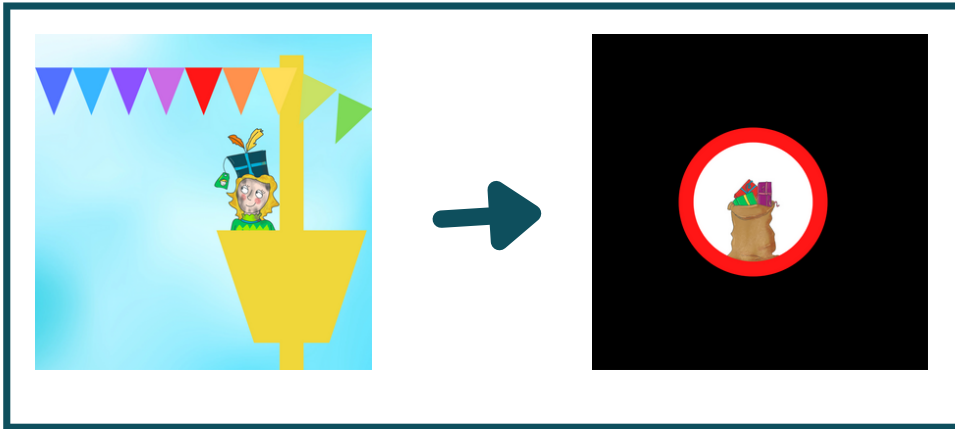
- wat zien jullie allemaal op de beebotmat?
- hoeveel pieten zie je op de beebotmat?
- wat hoort bij piet en wat hoort bij sinterklaas?

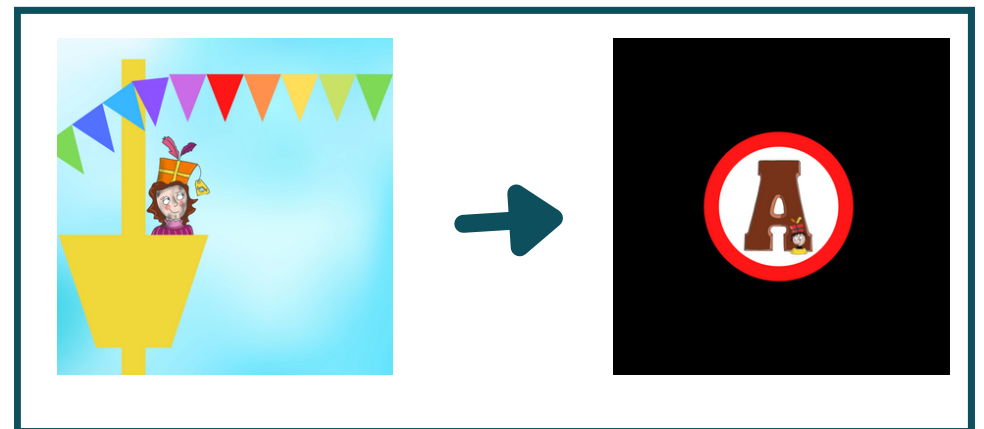
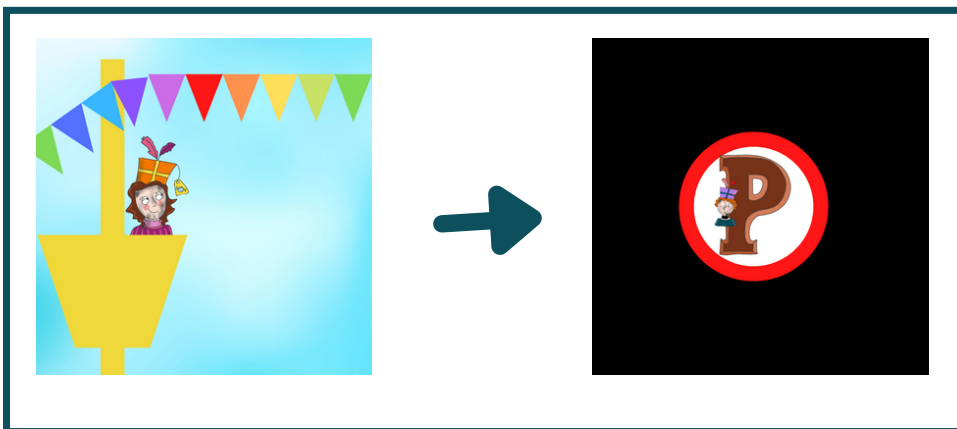
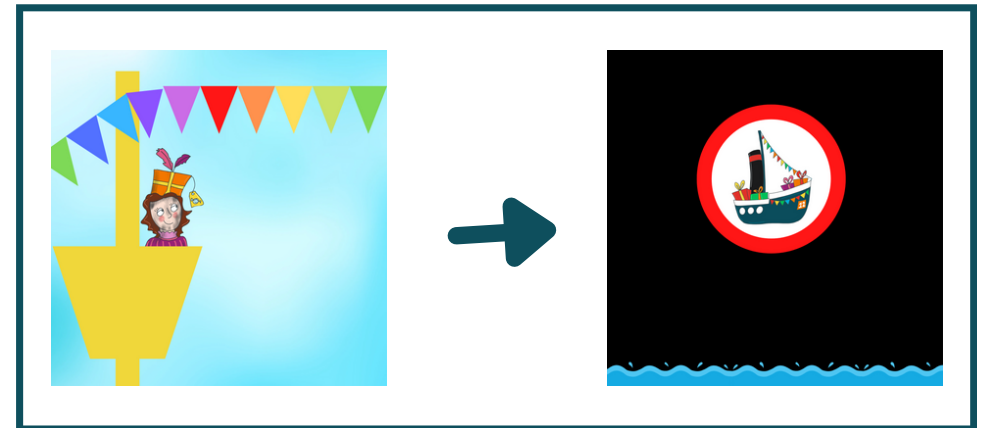
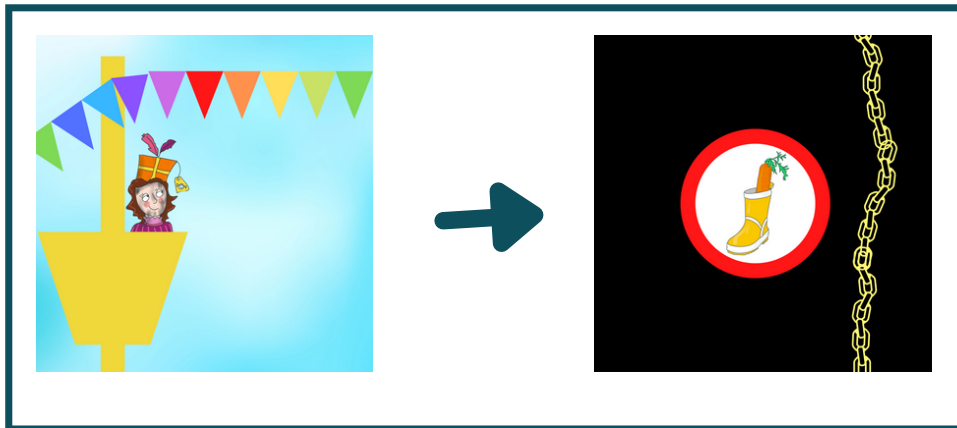
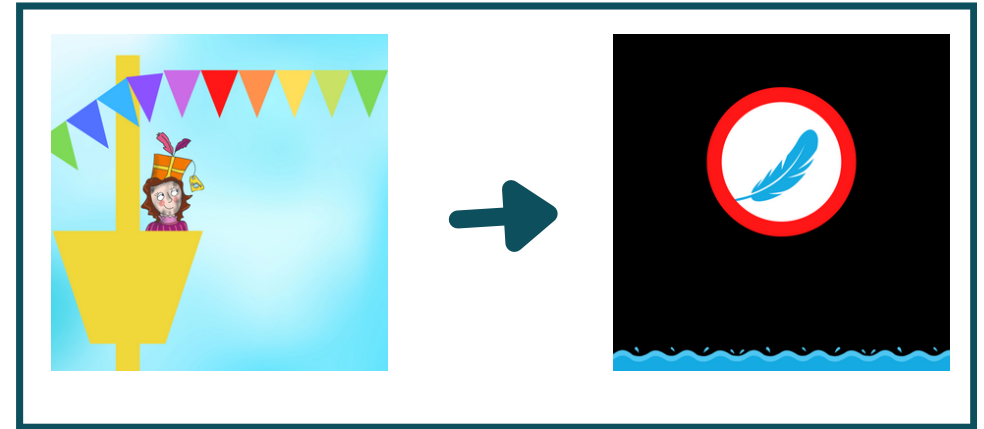
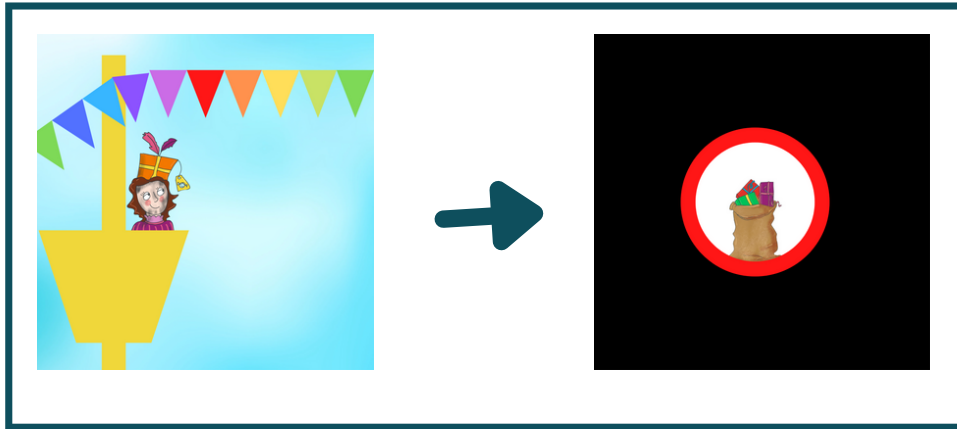
Laat ze daarna de beebot niveaukaarten zien. Deze kaarten kunnen kinderen gebruiken zodat de pieten of sinterklaas de juiste materialen uit de stoomboot haalt.

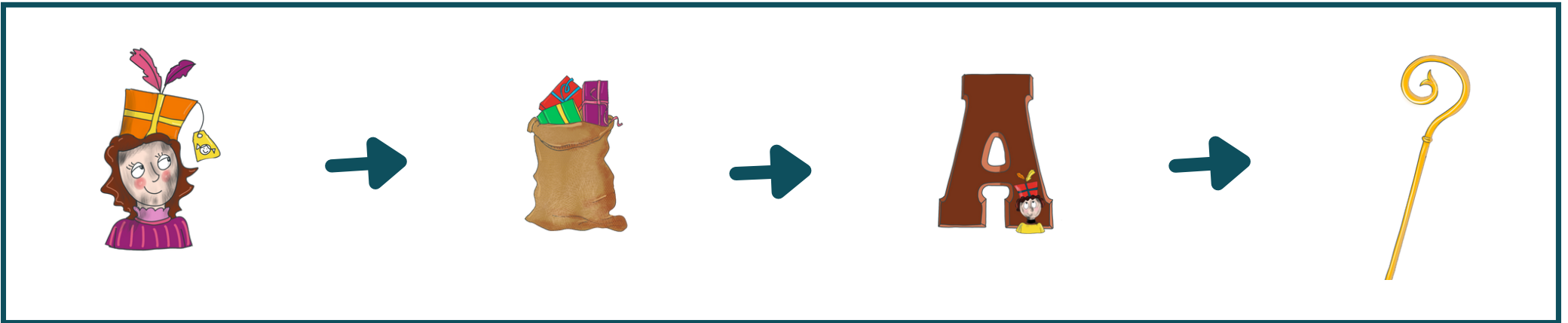
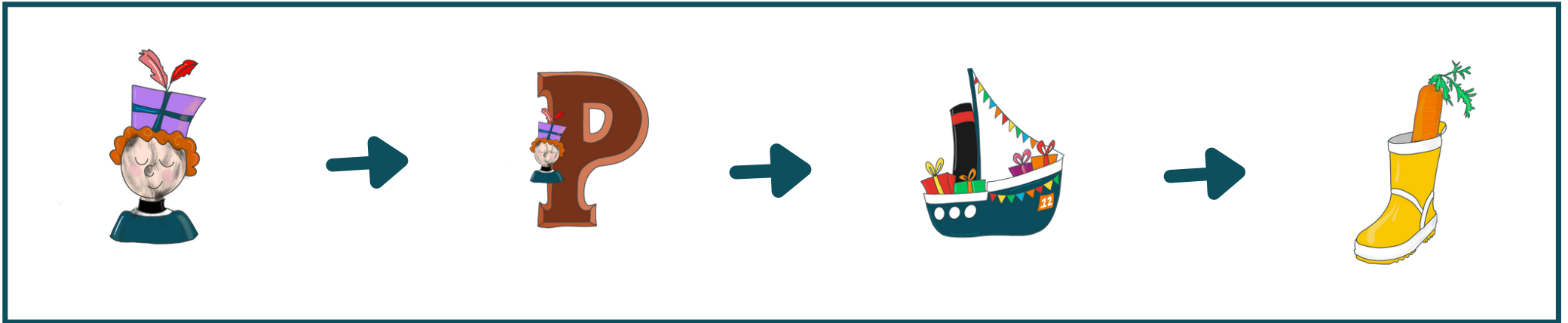
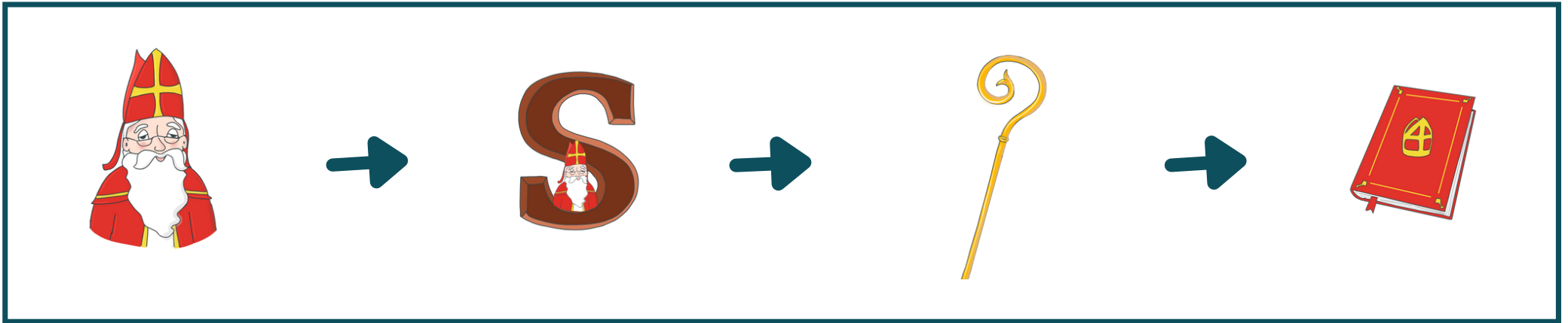
Veel succes!





























12





